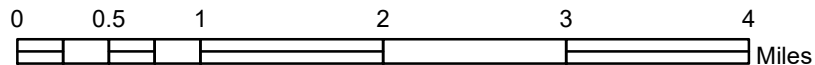
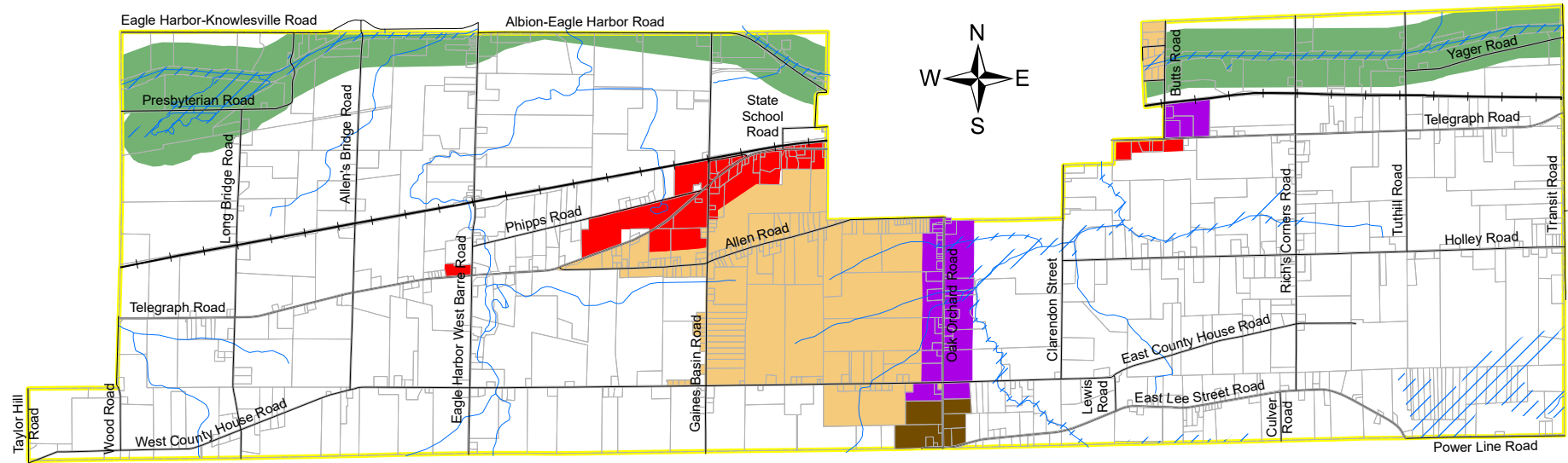



# Town of Albion Zoning Map



## Zoning Districts

-  A/R - Agricultural/Residential
-  B - General Business
-  C - Canal Overlay
-  Flood Hazard Overlay \*
-  LI - Light Industrial
-  PD - Planned Development
-  R-1 - Residential

**Adopted: November 1997**

**Revised B District (Phipps Road): April 2004**

**Revised B District (Gaines Basin Rd.): April 2005**

**Revised LI District (Oak Orchard Rd.): October 2016**

**Revised LI District (Allen Rd.): March 2012**

**Revised A/R District (Gaines Basin Rd.), B District (Telegraph Rd.) and LI District (Route 98): October 2014**

**Revised A/R District (Parcel 84.-1-62 on West County House Rd.), Changed from LI-Light Industrial to R1-Residential: October 2021**



Prepared 10-29-21 by Orleans County Department of Planning and Development

Parcel Boundaries: September 2021 Orleans County Digital Updates

\* - Refer to Flood Insurance Rate Maps for Exact Boundaries

Refer to Zoning Ordinance text for description of Waste Management Facility Overlay Zone